

TYPE 1;	<i>Timber Frame Spandrel Panel for Masonry Wall (Single skin Fermacell)</i>
PANEL	TIMBER FRAME
BOARD	FERMACELL
STRUCTURE	MASONRY PARTY WALL

Document Ref
Fermacell Spandrel Panels
Manufactured in accordance with
fermacell Spandrel Panel
fermacell Single Skin Solutions Document Jan 2018

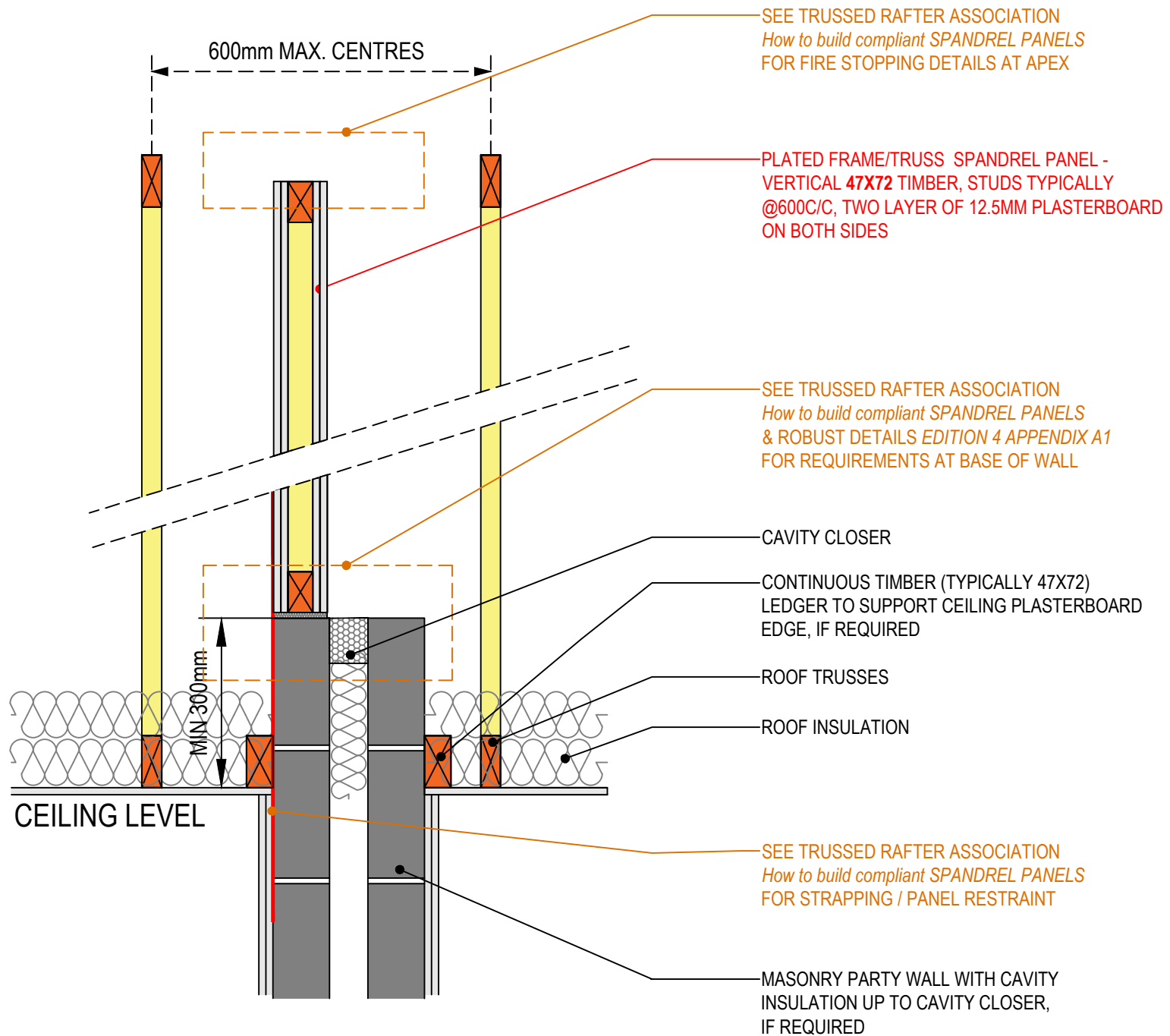
TRUSSED RAFTER ASSOCIATION
How to build compliant SPANDREL PANELS
Document V3 April 2018

ROBUST DETAILS
Edition 4 September 2018 Update

This is generic guidance information designed for use by persons within the industry who understand the business they work in. While this document has been prepared in good faith and all reasonable efforts have been made to ensure its adequacy and accuracy, no representation, warranty, assurances or undertaking (express or implied) is or will be made

TO BE READ IN CONJUNCTION WITH

EDITION 1 / DECEMBER 2018



TYPE 2;	<i>Plated Spandrel Panel for Masonry Wall (Two layers of Plasterboard)</i>
WALL	PLATED FRAME TRUSS
BOARD	PLASTERBOARD
STRUCTURE	MASONRY PARTY WALL

Document Ref

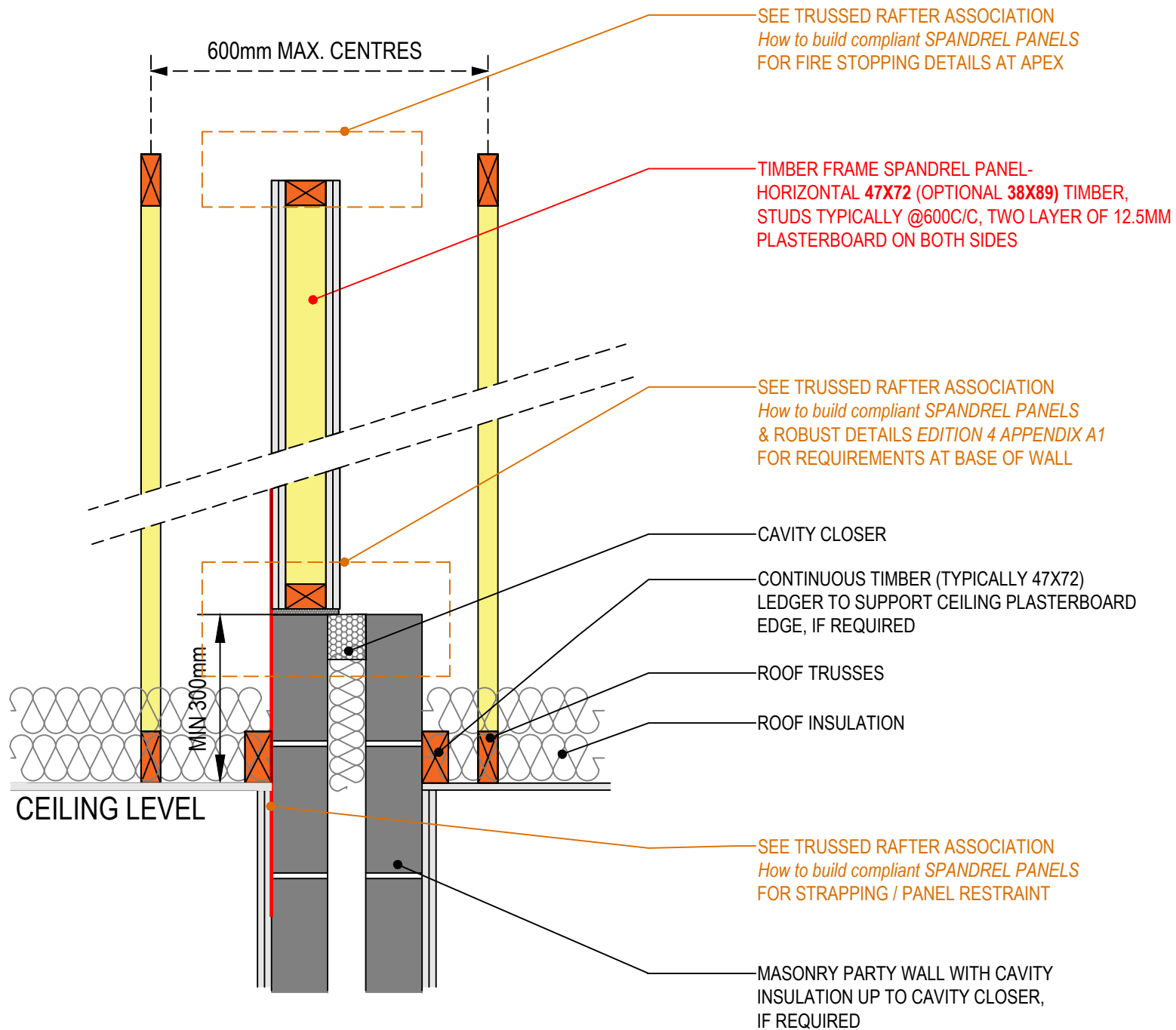
TRUSSED RAFTER ASSOCIATION
How to build compliant SPANDREL PANELS
Document V3 April 2018

ROBUST DETAILS
Edition 4 September 2018 Update

This is generic guidance information designed for use by persons within the industry who understand the business they work in. While this document has been prepared in good faith and all reasonable efforts have been made to ensure its adequacy and accuracy, no representation, warranty, assurances or undertaking (express or implied) is or will be made

TO BE READ IN CONJUNCTION WITH

EDITION 1 / DECEMBER 2018



TYPE 3;	<i>Timber Frame Spandrel Panel for Masonry Wall (Two layers of Plasterboard)</i>
WALL	TIMBER FRAME
BOARD	PLASTERBOARD
STRUCTURE	MASONRY PARTY WALL

Document Ref
Fermacell Spandrel Panels
Manufactured in accordance with
*fermacell Spandrel Panel
fermacell Single Skin Solutions Document Jan 2018*

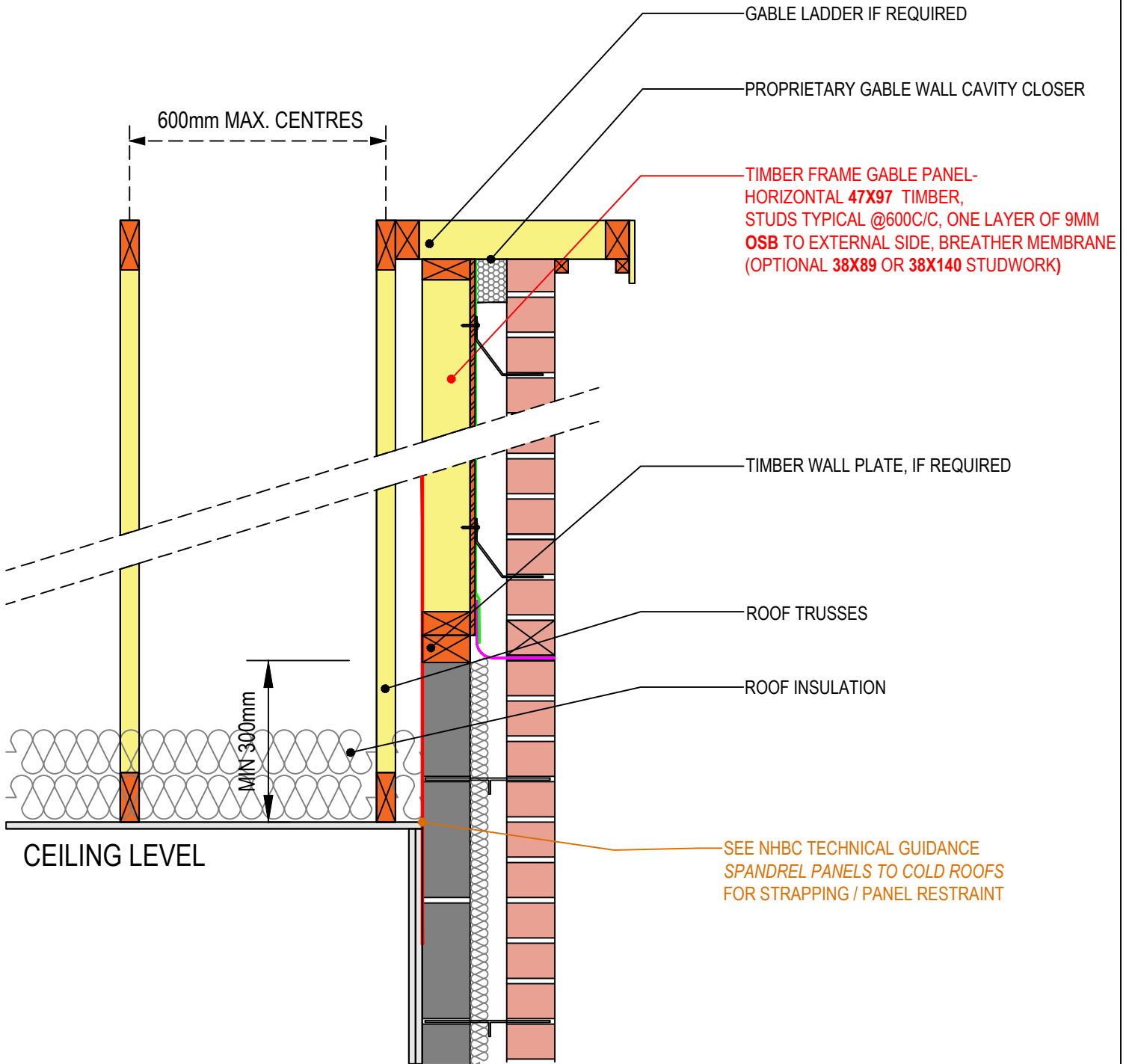
TRUSSED RAFTER ASSOCIATION
*How to build compliant SPANDREL PANELS
Document V3 April 2018*

ROBUST DETAILS
Edition 4 September 2018 Update

This is generic guidance information designed for use by persons within the industry who understand the business they work in. While this document has been prepared in good faith and all reasonable efforts have been made to ensure its adequacy and accuracy, no representation, warranty, assurances or undertaking (express or implied) is or will be made

TO BE READ IN CONJUNCTION WITH

EDITION 1 / DECEMBER 2018



TYPE 4; *Gable Panel for Masonry Wall*

PANEL *TIMBER FRAME*

BOARD *9MM OSB*

STRUCTURE *MASONRY GABLE WALL*

Gable Panels manufactured in accordance with project specific engineering and NHBC TECHNICAL GUIDANCE SPANDREL PANELS TO COLD ROOFS 7.2/25 Jan2018 (First Issue)

This is generic guidance information designed for use by persons within the industry who understand the business they work in. While this document has been prepared in good faith and all reasonable efforts have been made to ensure its adequacy and accuracy, no representation, warranty, assurances or undertaking (express or implied) is or will be made

TO BE READ IN CONJUNCTION WITH

EDITION 1 / DECEMBER 2018